

Fishing GUIDE

2026

25 Doubs Fishing and Aquatic Ecosystem Protection Federation



www.federation-peche-doubs.org



2 MAGASINS AU BORD DE L'EAU
NOS ÉQUIPES DE PASSIONNÉS À VOTRE SERVICE !
CAPERLAN

NOS SERVICES :
 VENTE D'APPÂTS VIVANTS
 CARTE FIDÉLITÉ GRATUITE

NOS PRODUITS POUR :
 LA PÊCHE AU COUP
 LA PÊCHE AU LEURRE
 LA PÊCHE DE LA CARPE
 LA PÊCHE DE LA TRUITE

BESANÇON
 ZAC CHATEAUFARINE
 9H-19H30

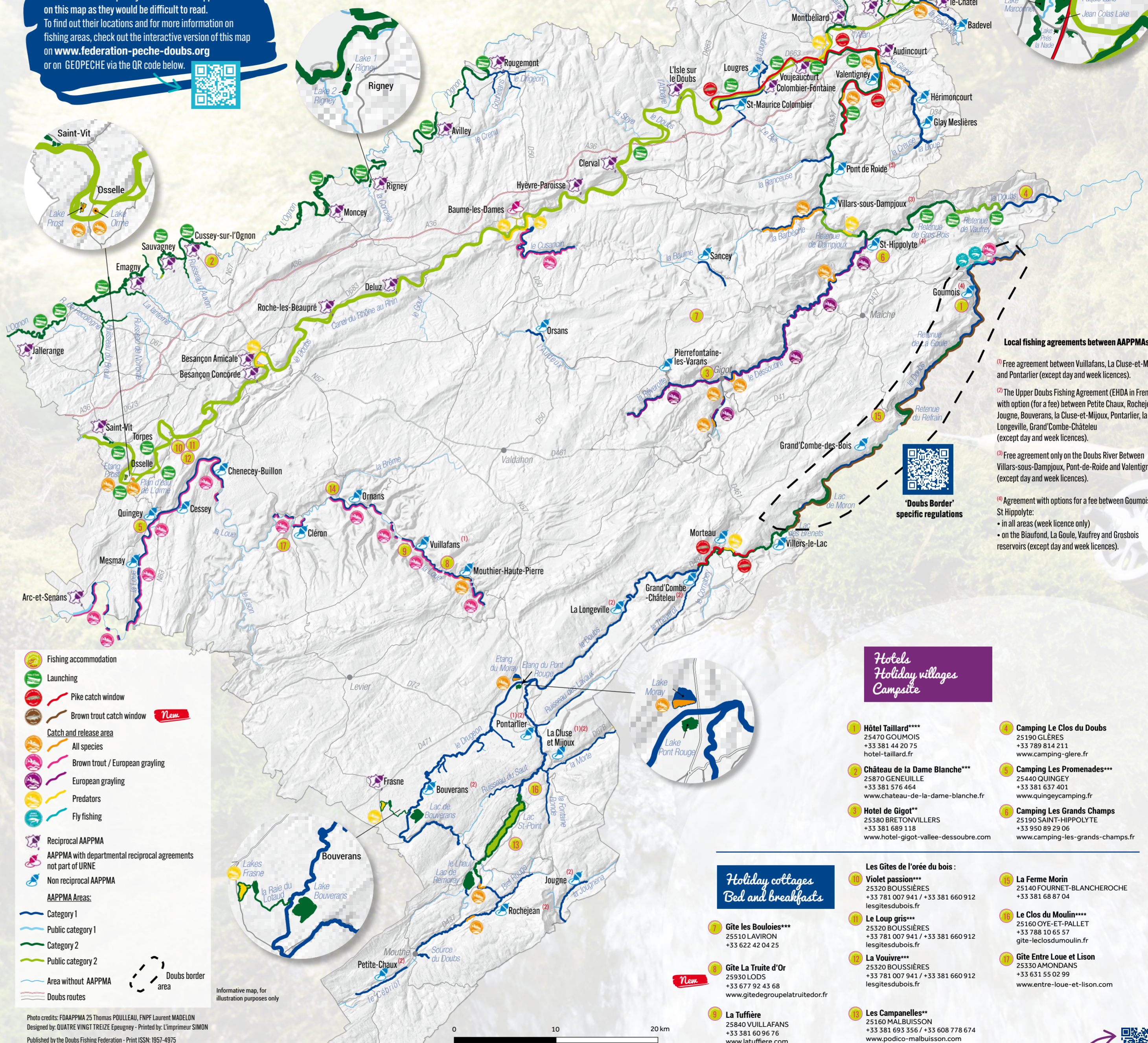
PONTARLIER
 ZAC DE LA GOUILLES DES SAUGES
 9H-19H

DECATHLON

Fishing map of Doubs department

Permanent and temporary reserves do not appear on this map as they would be difficult to read. To find out their locations and for more information on fishing areas, check out the interactive version of this map on www.federation-peche-doubs.org or on GEOPECHE via the QR code below.

You can download detailed information on each AAPPMA's fishing areas on our website in the 'Fishing in the Doubs region' section / AAPPMA



- Fishing accommodation
- Launching
- Pike catch window
- Brown trout catch window **New**
- Catch and release area
- All species
- Brown trout / European grayling
- European grayling
- Predators
- Fly fishing
- Reciprocal AAPPMA
- AAPPMA with departmental reciprocal agreements not part of URNE
- Non reciprocal AAPPMA
- AAPPMA Areas:
 - Category 1
 - Public category 1
 - Category 2
 - Public category 2
- Area without AAPPMA
- Doubs border area
- Doubs routes

Photo credits: FDAAPPMA 25 Thomas POUILLEAU, FNPF Laurent MADELON
 Designed by: QUATRE VINGT TREIZE Epeugney - Printed by: L'imprimeur SIMON
 Published by the Doubs Fishing Federation - Print ISSN: 1957-4975

- Local fishing agreements between AAPPMA's:**
- Free agreement between Vuillafans, La Cluse-et-Mijoux and Pontarlier (except day and week licences).
 - The Upper Doubs Fishing Agreement (EHDA in French) with option (for a fee) between Petite Chaux, Rochejean, Jougne, Bouverans, la Cluse-et-Mijoux, Pontarlier, la Longeville, Grand'Combe-Châteletu (except day and week licences).
 - Free agreement only on the Doubs River Between Villars-sous-Dampjoux, Pont-de-Roide and Valentigney (except day and week licences).
 - Agreement with options for a fee between Goumois and St Hippolyte:
 - In all areas (week licence only)
 - on the Biaufond, La Goule, Vautreay and Grosbois reservoirs (except day and week licences).



'Doubs Border' specific regulations

Hotels Holiday villages Campsite

- Hôtel Taillard******
25470 GOUMOIS
+33 381 44 20 75
hotel-taillard.fr
- Château de la Dame Blanche*****
25870 GENEUILLE
+33 381 576 464
www.chateau-de-la-dame-blanche.fr
- Hotel de Gigot****
25380 BRETONVILLERS
+33 381 689 118
www.hotel-gigot-vallee-dessoubre.com
- Hôtel Campanelles****
25160 MALBUISSON
+33 381 693 356 / +33 608 778 674
www.podicco-malbuissou.com
- Les saisons de Bernadette*****
25290 SCEY-MAISIÈRE
+33 381 53 38 62
laurenceboillon.wixsite.com/chez-bernadette
- Camping Le Clos du Doubs**
25190 GLÈRES
+33 789 814 211
www.camping-glere.fr
- Camping Les Promenades*****
25440 QUINGEY
+33 381 637 401
www.quingeycamping.fr
- Camping Les Grands Champs**
25190 SAINT-HIPPOLYTE
+33 950 89 29 06
www.camping-les-grands-champs.fr
- La Ferme Morin**
25140 FOURNET-BLANCHEROCHE
+33 381 68 87 04
- Le Clos du Moulin******
25160 OYE-ET-PALLET
+33 788 10 65 57
gite-leclosdumoulin.fr
- Gîte Entre Loue et Lison**
25330 AMONDANS
+33 631 55 02 99
www.entre-loue-et-lison.com

Holiday cottages Bed and breakfasts

- Gîte les Bouloies*****
25510 LAVIRON
+33 622 42 04 25
- Gîte La Truite d'Or**
25930 LODS
+33 677 92 43 68
www.gitedegroupelatruidetedor.fr
- La Tuiffière**
25840 VUILLAFANS
+33 381 60 96 76
www.latuiffiere.com

TERRITOIRE PÊCHE
 votre passion est notre métier

4 MAGASINS EN FRANCHE-COMTÉ

BESANÇON
 1 Rue des Salines
 25480 Ecole-Valentin
 03 81 88 06 47

VESOUL
 Zac de l'Oasis
 70000 Pusey
 03 84 68 98 01

T
P

PONTARLIER
 5 Rue Edgar Faure
 25300 Pontarlier
 03 81 49 06 80

LURE
 ZI Aux Cloyes
 70200 Lure
 03 84 20 83 63

POUR ENCORE PLUS DE SERVICES
 Retrouvez nous prochainement sur

www.territoire-peche.fr

USE OF BAITS IN SECOND CATEGORY DURING THE CLOSED SEASON FOR PIKE, ZANDER, AND BLACK BASS

In the Doubs, "fishing with live bait, dead fish, or artificial lures likely to catch pike intentionally is prohibited from the last Sunday of January (exclusive) to the last Friday of April (inclusive)." (Excerpt from the ARP)

Natural baits:
 Earthworms, mealworms, Canadian worms, maggots, moth larvae, seeds, pieces of bacon, pieces of chicken, squid strips...

Fishes:
 Dry flies, emergers, wet flies, nymphs

Natural baits:
 Live bait, dead fish (actively fished or stationary)

Hard lures:
 Swimbait: stickbaits, jerkbaits, crankbaits, poppers...

Soft lures:
 Shads, finesse baits, twisters, grubs, creature baits (crayfish, frogs, ...), worms, larvae, artificial insects

Metallic lures:
 Spoons and spinners, vibrating blades, spinnerbaits, buzzbaits, chatterbaits, jigs, blade jigs...

All these lures are allowed stationary and not actively manipulated

Fishes:
 Streamers, poppers

Fédération Départementale PÊCHE
 federationpechedoubs.org
 www.facebook.com/federationpechedoubs

Univers Pêche

La pêche pour TOUS, notre métier !

www.universpeche25.fr

Adresse **Contact** **Nos réseaux**

ZAC ChateauFarine 09 83 70 56 40 @ up_besancon
 7 b chemin @ up_pontarlier @ up_lure
 des 4 journaux @ up_lure @ up_lure
 25770 FRANOIS mag@universpeche25.fr @ Univers_peche

Doubs Fishing and Aquatic Ecosystem Protection Federation
 4, rue du Docteur Morel 25720 BEURE
 Tel: +33 381 411 909 / Fax: +33 381 411 929
 e-mail: fedepeche25@federation-peche-doubs.org
www.federation-peche-doubs.org

Texts translation of this fishing guide on our website.
 Die Übersetzung der Texte dieses Angelführers ist auf unserer Webseite zu finden.
www.federation-peche-doubs.org

Protégez-vous du risque électrique. Découvrez tous nos conseils sur **Tension Attention**.

ERDIS **RTE**

L'énergie est notre avenir, économisons-la!

Fishing regulations 2026



Angling in the department of Doubs is subject to specific regulations, depending on the waterway on which it is carried out.

There are essentially **three main classes**:

- Private category 1 waterways. Example: Cusancin, Dessoubre, Haut Doubs, Loue...
- Private category 2 waterways. Example: Doubs middle course, Ognon, Savoureuse...
- Public category 2 waterways and canals. Example: Doubs middle course, Rhône-Rhine Canal...

And three specific cases:

- A public category 1 section on the Loue River (Arc-et-Senans section).
- Two category 2 hydroelectric reservoirs ('classified as public' as far as fishing is concerned): Vaufrey and Poset Lakes.
- **Warning! Doubs border** (sector between Villers-le-Lac and Clairbief and upstream of Bremoncourt). **All regulations in this sector are specific (fishing hours, opening periods, etc.) and are available on our website. Different measures apply in the two categories. Please scan the QR code above for more information.**

The following information is a summary of the main texts in existence, taken from the French Environmental Code and the Permanent Regulatory Order concerning freshwater fishing in the department of Doubs.

Internal regulations or specific fishing regulations cannot substitute the general regulations presented in this document.

The Federation shall not be held responsible for this information.

Fishing conduct and methods

In category 1, members of an AAPPMA can fish using:
+1 line in private waters.
+2 lines in public waters (Arc-et-Senans section of the Loue River only).

In category 2, members of an AAPPMA can fish using:
+4 lines in private waters.
+4 lines in public waters.
+3 lines on the border section of the Doubs, including one rod without a reel to catch live bait.

In both categories, members of an AAPPMA can fish using:
• One glass jug or bottle with a maximum capacity of 2 litres to catch minnows and other fish to use as bait
• Six drop nets, with a maximum diameter or diagonal measurement of 30 cm, with 27 mm or 10 mm mesh for catching signal crayfish. However, using them is forbidden on the border section of the Doubs.

The lines must be fitted onto rods and equipped with two hooks or three artificial flies at most. On the border section of the Doubs, lines must be equipped with a maximum of 2 hooks.

However, in the Saint-Point, Remoray and Bouverans lakes, the maximum number of hooks per line is set at 10, with a limit of 20 in total for all the lines being used for fishing at one time.

No-fishing zones

- Reserves protected by a prefectural order.
- Fish ladders.
- Locks.
- Waterways inside buildings.

On all of the department's navigable public waterways and canals, all fishing is banned at dams and locks and within a distance of at least 50 metres upstream and downstream of them. There are signs specifying these limits, which may differ depending on the type of dam or lock.

On all of the department's non-navigable private waterways and canals, all fishing is banned at dams and locks and within a distance of at least 50 metres downstream of them, except fishing with a single line.

Fish consumption

Following evidence of all or some species present in certain stretches of river being contaminated with certain pollutants (especially PCB), the consumption of fish (of all species) is forbidden in the following sections:

- Ognon, from the Montferney dam to the Montbozon dam.
- Allan, along its entire course.
- Savoureuse, along its entire course in the department.
- Lizaine, along its entire course in the department.

The canals and lakes deriving from the aforementioned waterways are subject to the same measures. Tributaries are not affected. These restrictions do not apply to authorised fishing.

Check out the interactive map of the Doubs River on **GEOPECHE**™

Including its course, regulations, reserves, launches, etc.

Specific measures

In category 1,

- Fly fishing is only allowed from the 2nd Saturday in March until the Friday before the 3rd Saturday in May; with a fly rod, a single fly and a single barbless hook or hook with a crushed barb; and on the following waterways or sections of waterways: The Loue River and its tributaries, Dessoubre and its tributaries, Cusancin and its tributaries.
- From the 3rd Saturday in May (start of the grayling season), fly fishing is allowed to take place there using all methods authorised by general regulations (3 fly lures at most, float, etc.), as in the rest of the department.

To protect salmonid reproduction, entering the water is forbidden from the 2nd Saturday in March until 30 April. This prohibition is extended to the 3rd Saturday in May in the following waterways or sections of waterways (grayling protection): The Loue River and its tributaries, Dessoubre and its tributaries, Cusancin and its tributaries. On the border section of the Doubs, it is forbidden from 1 March until 31 May.

Using cheese, maggots or other insect larvae as bait is forbidden. Furthermore, on the border section of the Doubs, the use of rat-railed maggots and mealworms is forbidden.

In category 2:

- During the period when pike fishing is forbidden, fishing with live bait, dead bait, artificial bait, a spoon lure or another lure that may catch a pike non-accidentally (all artificial lures, like streamers, or wobbed natural baits, like worms) is forbidden. However, this prohibition only applies from the 2nd Saturday in March to the Doubs River between Moulin de Glère (boundary between category 1 and 2) and the D438 bridge at Voujeaucourt.

In both categories, the following is forbidden:

- Handfishing, fishing with a net and ice fishing.
- Stirring up the water to fish, except in the case of gudgeon fishing.
- Trolling. However, in the Saint-Point and Remoray lakes, trolling with a maximum of 3 lines is allowed on rowing boats only.
- Using the following as bait: fish roe of any kind or origin, species with a legal catching size (even if the bait is this size or larger), species not detailed on the list of officially present species in the waters subject to the freshwater fishing policy, and protected species.
- Releasing the following species, transporting them live or using them as bait: catfish, pumpkinseed, pseudorasbora, Chinese sleeper, spinycheek crayfish, marbled crayfish, virile crayfish; signal crayfish, red swamp crayfish.
- Keeping a fish not caught by the mouth (unless caught in a jug or a bottle).
- Using barbed hooks in catch and release areas.

Specific regulations

On Loue, Dessoubre and Cusancin basins, due to episodes of salmonid death in recent years, the following measures apply in 2026:

- **Maximum of 2 brown trout per day and catch and release only for the European grayling in the Dessoubre River** (including tributaries and sub-tributaries). **Barbless hooks** or hooks with a crushed barb for fishing with an artificial fly (rod or bubble float) or natural bait (except minnows).
- **Catch and release only for the brown trout and the European grayling in the Loue River and the Cusancin River** (including tributaries and sub-tributaries). Fishing (all methods) is only allowed with **barbless hooks** or hooks with a crushed barb.

Pike catch window in the experimental area:

The implementation of a pike catch window aims to ensure sustainable fishing and preserve the populations of this emblematic species. In the designated sectors below, anglers must follow strict rules regarding the size of pikes they catch. Specimens measuring less than 60 cm or exceeding 80 cm must be released immediately after capture:
• the Doubs from the Pont de la Roche (municipality of Grand'Combe-Châteleur) to the dam of the Pont de Sobey (municipalities of Mortau / Montlebon)
• the Doubs, 700 meters downstream from the church of Bourguignon (municipalities of Bourguignon / Mandeuire) to the dam of Prétière (municipalities of Bussangeaux / Saint Maurice-Colombier).

Catch window for brown trout on the Doubs border:
Brown trout may only be kept if it reaches the following lengths: - from 30 to 35 cm - from 55 cm and above.

This "catch window" for brown trout is being implemented as part of a three-year experimental program starting in 2026.

Size and number of catches

Species	Section	Legal size	Number of catches Per angler per day
Brown trout	The Doubs, from the 558 boundary marker (Bremoncourt) to the departmental border with Jura, excluding tributaries.	30 cm	4 salmonids (a maximum of 2 brown trout from the Dessoubre and its tributaries)
	The Dessoubre: the entire length of the river, excluding tributaries.	30 cm	
	Doubs border	From 30 to 35 cm From 55 cm and above	
European grayling	Doubs border	25 cm	4 salmonids, including a maximum of 2 grayling, with a maximum annual quota of 30 salmonids.
	Areas not mentioned	35 cm	
	The Doubs, from the 558 boundary marker (Bremoncourt) to the D438 bridge at Voujeaucourt, excluding tributaries.	30 cm	
Rainbow trout, Arctic char, Brook trout	Doubs border	30 cm	5 per day, 200 per year
	Areas not mentioned	25 cm	
European cisco	All over the department, Categories 1 and 2	32 cm	2 pikes
	Category 1	50 cm	
Pike*	Category 2 and Drugeon	60 cm	3 predatory fish (pike, zander, black bass), including a maximum of 2 pikes
	Category 2	50 cm	
Zander	Category 2	40 cm	Doubs border: 3 pikes
Black bass	All over the department, Categories 1 and 2	No size	No restriction

Legal catch sizes: The length of the fish is measured from the tip of its snout to the end of its outstretched tail fin. Specimens smaller than the legal size must be released back into the water immediately, whether alive or dead. Furthermore, transporting a live carp measuring longer than 60 cm is forbidden.

Please note! On the border section of the Doubs, any salmonid or pike catches must be recorded in a fishing logbook.

*Caution, catch window on 2 areas, look at specific regulations.

Fishing seasons

	Category 1	Category 2
General fishing season	Saturday 14 March to Sunday 20 September 2026 both dates inclusive	Thursday 1 January to Thursday 31 December 2026 both dates inclusive
Specific fishing seasons		
Brown trout Brook trout Arctic char	General fishing season	Doubs border: Sunday 1 March to Wednesday 30 September, both dates inclusive
European grayling	Saturday 16 May to Sunday 20 September, both dates inclusive	Doubs border: Saturday 16 May to Wednesday 30 September, both dates inclusive
European cisco	General fishing season	Saturday 14 March to Sunday 1 November, both dates inclusive
Pike Perch	General fishing season*	Haut-Doubs**: Thursday 1 January to Sunday 25 January, both dates inclusive and Saturday 30 May to Thursday 31 December, both dates inclusive
Black bass	General fishing season	Doubs border: Thursday 1 January to Saturday 28 February, both dates inclusive and Tuesday 16 June to Thursday 31 December, both dates inclusive
Zander	Ouverture générale	Other sectors: Thursday 1 January to Sunday 25 January, both dates inclusive and Saturday 4 July to Thursday 31 December, both dates inclusive
Silver eel		Fishing forbidden all year
Crayfish (European, stone, white-clawed, narrow-clawed)		Fishing forbidden all year
Edible and common frogs	Saturday 9 May to Sunday 20 September, both dates inclusive	Saturday 9 May to Thursday 31 December, both dates inclusive
Other frog species		Fishing forbidden all year
Other species	General fishing season	General fishing season

*In category 1, any pike caught between 14 March and 24 April must be released back into the water immediately. This rule is extended to 29 May in all sections classed as category 1 on the Doubs, its tributaries and its sub-tributaries, upstream of Chailleux Lake.

**Haut-Doubs: The Doubs and its tributaries classed as category 2, including lakes, upstream of Chailleux Lake: The Doubs from the Labergement-Sainte-Marie bridge to the Oye-et-Pallet dam (including Saint-Point Lake) and from the La Roche bridge to Chailleux Lake (boundary with the Doubs along the international border), Remoray Lake and its drainage tunnel La Taverne, Raie du Lotaud (including the Frasse and Pont Rouge lakes).

Fishing times

Fishing may not take place earlier than half an hour before sunrise nor later than half an hour after sunset.

This schedule indicates the start and end times of a fishing day and takes into account the 30-minute tolerances (Besançon time).

Seasonal time changes (summer/winter) have been applied in the table, subject to their official implementation.

JANUARY 2026	FEBRUARY	MARCH	APRIL	MAY	JUNE	JULY	AUGUST	SEPTEMBER	OCTOBER	NOVEMBER	DECEMBER
Days Start End	Days Start End	Days Start End	Days Start End	Days Start End	Days Start End	Days Start End	Days Start End	Days Start End	Days Start End	Days Start End	Days Start End
1 f 07:52 17:25	1 s 07:31 18:07	1 s 06:46 18:50	1 f 06:45 20:35	1 f 06:45 21:15	1 f 06:43 21:54	1 f 06:43 22:05	1 s 05:44 23:30	1 f 06:24 20:46	1 f 07:04 19:45	1 s 06:48 17:40	1 f 07:31 12:17
2 f 07:52 17:27	2 m 07:30 18:09	2 m 06:44 18:52	2 f 06:43 20:36	2 s 06:48 21:16	2 f 06:43 21:55	2 f 06:44 22:06	2 s 05:45 23:38	2 w 06:25 20:44	2 f 07:05 19:43	2 m 06:50 17:42	2 w 07:32 12:17
3 s 07:52 17:28	3 f 07:29 18:10	3 f 06:42 18:53	3 f 06:41 20:38	3 s 06:46 21:19	3 s 06:46 21:58	3 f 06:44 22:05	3 m 05:46 23:36	3 f 06:27 20:42	3 s 07:07 19:41	3 f 06:51 17:46	3 f 07:34 12:17
4 s 07:52 17:29	4 w 07:27 18:12	4 w 06:40 18:55	4 s 06:39 20:39	4 m 06:45 21:22	4 f 06:42 21:56	4 s 06:45 22:04	4 t 05:48 23:35	4 f 06:28 20:40	4 s 07:08 19:39	4 w 06:53 17:44	4 f 07:35 12:16
5 m 07:52 17:30	5 f 07:26 18:14	5 f 06:38 18:56	5 s 06:37 20:40	5 f 06:43 21:22	5 f 06:41 21:57	5 s 06:40 22:04	5 w 05:49 23:33	5 m 06:30 20:38	5 m 07:10 19:37	5 t 06:54 17:49	5 s 07:36 12:16
6 f 07:52 17:31	6 f 07:24 18:15	6 f 06:36 18:58	6 m 06:35 20:42	6 w 06:42 21:23	6 s 06:41 21:58	6 s 06:41 22:03	6 t 05:50 23:32	6 s 06:21 20:36	6 t 07:11 19:35	6 f 06:56 17:42	6 s 07:37 12:16
7 w 07:51 17:32	7 s 07:23 18:17	7 s 06:34 18:59	7 f 06:33 20:43	7 f 06:40 21:25	7 s 06:40 21:59	7 f 06:41 22:03	7 f 05:51 23:30	7 m 06:32 20:34	7 w 07:12 19:33	7 s 06:57 17:40	7 m 07:38 12:16
8 t 07:51 17:33	8 s 07:22 18:18	8 s 06:32 19:01	8 m 06:31 20:45	8 f 06:39 21:26	8 m 06:40 21:59	8 s 06:40 22:02	8 t 06:34 20:32	8 t 06:34 20:32	8 t 07:14 19:31	8 s 06:59 17:39	8 t 07:39 12:15
9 f 07:51 17:35	9 m 07:20 18:20	9 m 06:30 19:02	9 f 06:29 20:48	9 s 06:37 21:27	9 f 06:40 22:00	9 f 06:40 22:02	9 s 06:35 21:27	9 s 06:35 20:30	9 f 07:15 19:29	9 m 07:30 17:37	9 w 07:40 12:15
10 m 07:50 17:36	10 t 07:18 18:21	10 t 06:29 19:04	10 f 06:27 20:47	10 s 06:36 21:28	10 w 06:39 22:01	10 f 06:39 22:01	10 m 05:35 23:25	10 t 06:26 20:28	10 s 07:17 19:28	10 t 07:32 17:36	10 t 07:41 12:15
11 s 07:50 17:37	11 w 07:17 18:23	11 w 06:25 19:08	11 m 06:25 20:49	11 m 06:35 21:30	11 t 06:39 22:01	11 s 06:39 22:01	11 t 06:31 22:01	11 f 06:37 20:25	11 m 07:33 17:35	11 w 07:32 17:35	11 f 07:42 12:15
12 m 07:49 17:38	12 t 07:15 18:24	12 t 06:25 19:06	12 s 06:23 20:50	12 t 06:33 21:31	12 f 06:39 22:02	12 s 06:39 22:02	12 s 06:22 20:20	12 t 06:28 20:24	12 m 07:34 19:24	12 t 07:35 17:34	12 s 07:43 12:15
13 t 07:49 17:40	13 f 07:14 18:26	13 f 06:23 19:08	13 m 06:21 20:52	13 w 06:32 21:32	13 s 06:39 22:02	13 m 06:32 21:59	13 t 06:29 21:20	13 t 06:29 21:20	13 t 07:31 19:22	13 f 07:36 17:33	13 s 07:44 12:15
14 w 07:48 17:41	14 m 07:12 18:28	14 s 06:21 19:09	14 t 06:19 20:53	14 f 06:31 21:34	14 s 06:39 22:03	14 f 06:34 21:59	14 f 06:31 21:19	14 m 06:41 20:20	14 w 07:32 19:20	14 s 07:38 17:31	14 m 07:45 12:15
15 f 07:48 17:42	15 s 07:11 18:29	15 s 06:19 19:11	15 m 06:17 20:54	15 f 06:29 21:35	15 m 06:39 22:03	15 w 06:29 21:58	15 s 06:25 21:58	15 s 06:25 21:58	15 f 07:33 19:19	15 t 07:43 17:29	15 w 07:46 12:15
16 f 07:47 17:44	16 m 07:09 18:31	16 m 06:17 19:12	16 t 06:16 20:56	16 s 06:28 21:36	16 t 06:39 22:04	16 t 06:35 21:57	16 m 06:24 21:16	16 f 06:44 20:16	16 f 07:25 19:16	16 m 07:31 17:29	16 w 07:46 12:16
17 s 07:46 17:45	17 t 07:07 18:32	17 t 06:15 19:14	17 f 06:17 20:57	17 s 06:27 21:37	17 w 06:39 22:04	17 f 06:27 21:56	17 m 06:25 21:14	17 t 06:45 20:14	17 s 07:26 19:14	17 t 07:32 17:28	17 t 07:47 12:16
18 s 07:46 17:46	18 w 07:06 18:34	18 w 06:13 19:18	18 m 06:12 20:58	18 m 06:25 21:39	18 t 06:39 22:05	18 s 06:28 21:12	18 t 06:26 21:12	18 f 06:47 20:12	18 s 07:28 19:13	18 w 07:34 17:27	18 f 07:48 12:16
19 m 07:45 17:48	19 t 07:04 18:35	19 t 06:11 19:17	19 s 06:10 21:00	19 t 06:25 21:40	19 f 06:39 22:05	19 s 06:29 21:54	19 w 06:27 21:54	19 w 06:27 21:54	19 t 07:29 19:11	19 t 07:35 17:26	19 s 07:48 12:17
20 t 07:44 17:49	20 f 07:02 18:37	20 f 06:09 19:18	20 m 06:08 21:01	20 m 06:24 21:41	20 s 06:39 22:05	20 m 06:30 21:53	20 t 06:26 21:48	20 t 06:26 21:48	20 t 07:31 19:09	20 f 07:37 17:25	20 m 07:49 12:17
21 w 07:43 17:51	21 s 07:00 18:38	21 s 06:07 19:19	21 t 06:07 21:03	21 t 06:23 21:42	21 s 06:39 22:05	21 t 06:31 21:52	21 f 06:16 21:06	21 m 06:51 20:05	21 w 07:32 19:07	21 m 07:38 17:24	21 m 07:49 12:18
22 t 07:42 17:52	22 s 06:59 18:40	22 s 06:05 19:21	22 w 06:05 21:04	22 f 06:22 21:43	22 m 06:39 22:05	22 w 06:32 21:51	22 s 06:21 21:05	22 t 06:32 20:03	22 t 07:34 19:05	22 s 07:39 17:23	22 t 07:50 12:18
23 f 07:41 17:54	23 m 06:57 18:41	23 m 06:03 19:22	23 t 06:03 21:05	23 s 06:21 21:44	23 t 06:40 22:06	23 t 06:35 21:50	23 s 06:25 20:01	23 f 07:35 19:04	23 m 07:31 17:22	23 w 07:50 17:19	23 w 07:50 12:19
24 w 07:40 17:55	24 t 06:55 18:43	24 t 06:01 19:24	24 f 06:01 21:07	24 f 06:20 21:45	24 w 06:40 22:06	24 t 06:34 21:49	24 m 06:24 21:01	24 t 06:30 20:02	24 t 07:32 19:02	24 t 07:52 17:22	24 t 07:51 12:19
25 m 07:39 17:57	25 w 06:53 18:44	25 s 06:00 19:25	25 s 06:00 21:06	25 m 06:19 21:47	25 t 06:51 22:06	25 s 06:35 21:48	25 t 06:15 20:59	25 f 06:36 19:57	25 s 06:38 18:50	25 w 07:22 17:21	25 f 07:51 12:20
26 m 07:38 17:58											